

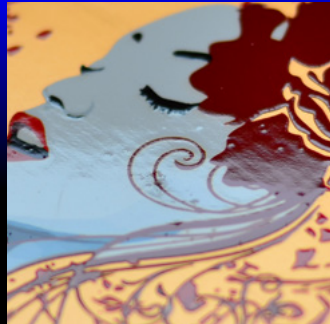


Experience **Axzyra**[®]
Print done differently.



2021

PRODUCT
BROCHURE



Axzyra[®]
takes your
print business
into new markets
you never thought
possible

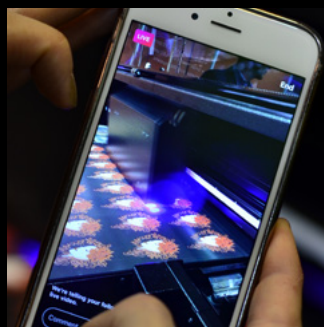


Our full line-up of Apache[®] flatbed printers are using the latest inkjet and curing technology.

Our experts provide full training, guidance and support. Amazing versatility, with incredible spot varnish, fluorescent inks, and embossing effects.

Intelligent RIP software, handling complex effects or simple job manipulation. Real time printing info, such as ink usage, print speed and timing.

Suitable for a wide range of applications, printing onto a vast array of materials and surfaces.



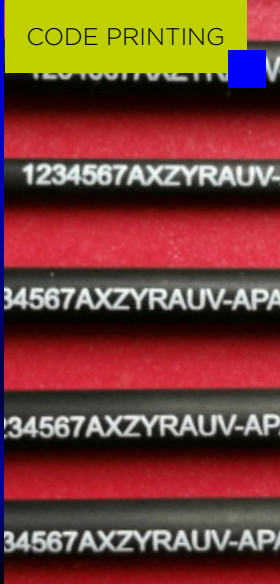
Apache[®]
UV FLATBED PRINTER



Experience **Axzyra**[®]
Print done differently.



EMBOSSSED



CODE PRINTING

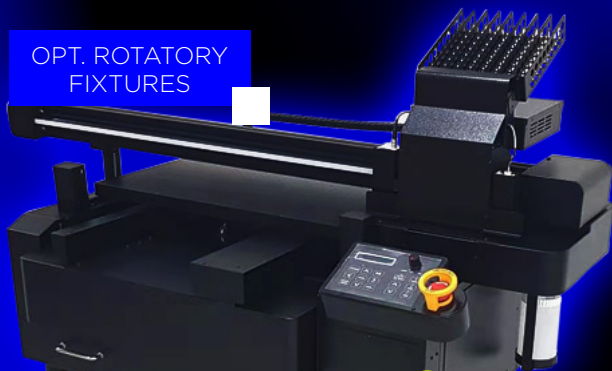
OUR MODELS:



OPT. ROTATORY FIXTURES

APACHE[®] GH4545Evo

Ink Drop & Print Head configuration:
3 x Ricoh GH2220
Curing: 1 x Air Cooled UV LED:
(40mm length)
Max. Print Area mm:
450mm x 450mm



OPT. ROTATORY FIXTURES

APACHE[®] TH6045Geni

Ink Drop & Print Head configuration:
2 x Ricoh TH5241
Curing: 2 x Air cooled UV LEDs:
2 x full UV LED (40mm length)
Max. Print Area mm:
650mm x 450mm

OUR TARGET MARKETS LET YOUR CREATIVITY RUN WILD:

- Packaging
- Prototyping
- Promotional gifts
- Signs & point of sale
- Industrial & security printing/marketing
- Personalisation of luxury goods



APACHE[®] TH6090Geni

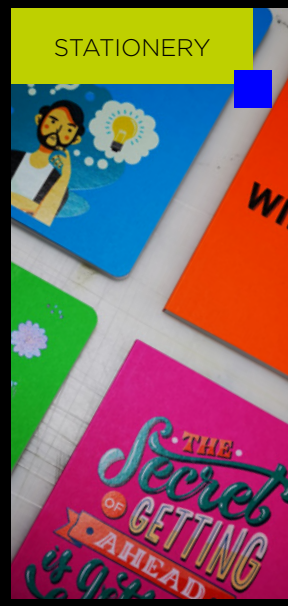
Ink Drop & Print Head configuration:
2 x Ricoh TH5241
Curing: 2 x Air Cooled UV LEDs:
2 x full UV LED (70mm length)
n/c option varnish lamp
Max. Print Area mm:
600mm x 900mm



WHITE INK

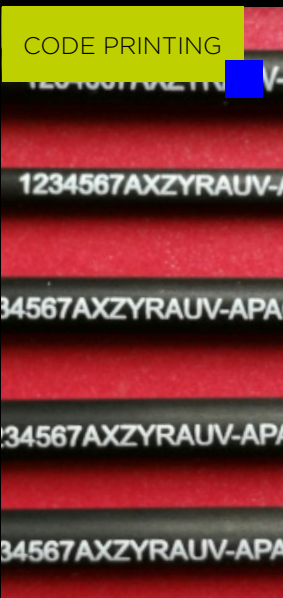


FOIL POUCH INKS



STATIONERY

CODE PRINTING



- Specialist inks & flush
- Print heads & Dampers
- Capping & maintenance stations
- Pipes & control boards

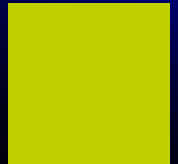
ORDER YOUR HARDWARE & CONSUMABLES FROM AXZYRA.CO.UK

ASK US ABOUT OUR ROUTINE INKJET, PRINT HEAD RECOVERY & MAINTENANCE SERVICES

- Print head flushing stations supply
- Training & consultancy for recovery
- Flushing & recovery services
- Spares & fluids always in stock

SAMPLE MARKETS

- Mobile accessories
- Signage
- Bespoke packaging
- Wearable technology
- Stationery
- Bags
- Clothing & leathers
- Engineering applications



WHITE INK

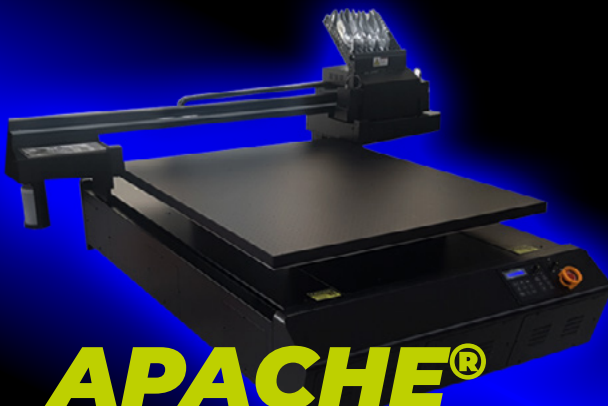


GIFT PRINTING

- Special & textured effects
- Embossed
- Braille print

ADDITIVE MANUFACTURING

- Small prototype components
- Badges
- Concepts & Mock-ups



APACHE® TH1012 Geni

Ink Drop & Print Head configuration:
2 x Ricoh TH5241

Curing: 2 x Air Cooled UV LEDs:
2 x full UV LED (70mm length)
n/c option varnish lamp

Max. Print Area mm:
1000mm x 1200mm

TEXTURE



SPOT GLOSS



APACHE® "FLUX" UV Geni

Ink Drop & Print Head configuration:
2 x Ricoh TH5241

Curing: 2 x Air cooled UV LEDs:
2 x full UV LED (40mm length)

Max. Print Area mm:
600mm x Unlimited

STATIONERY



Axzyra®

Experience printing innovation

Latest RICOH TH5241 – 4 channel MEMs print heads

Staggered head array Colour / White
– **64% faster** than the original 6090Evo.

Simplicity of head install design, with just 2 heads.
Clean & easy to maintain.

Heated head array for quick startup and consistent
jetting all year round.

Overhead ink delivery from pouches, mess-free ink
agitation whilst printing.

Short ink pipes for ease of maintenance (no chafing
through energy chains.)

Logical engineering practices with ease of
maintenance in mind.

NEW

HEAD CAPPING



NEW

PRINT HEADS



SPECIFICATIONS 2021	GH4545 Evo	TH6045 Geni	TH6090 Geni	TH1012 Geni	"FLUX" UV Geni
Print Head Technology	3 x Ricoh GH2220	2 x Ricoh TH5241	2 x Ricoh TH5241	2 x Ricoh TH5241	2 x Ricoh TH5241
Ink Drop & Print Head configuration	3.5, 7 & 11 (pl)	2.5, 5, 7.5 (pl) (Total 8 channels Colour & White - single row)	2.5, 5, 7.5 (pl) (Total 8 channels Colour & White / varnish stagger head config'	2.5, 5, 7.5 (pl) (Total 8 channels Colour & White / varnish stagger head config'	2.5, 5, 7.5 (pl) (Total 8 channels Colour & White single row)
Curing	1 x Air Cooled UV LED: (40mm length)	2 x Air cooled UV LED: Two full UV LED (40mm length)	2 x Air Cooled UV LED: Two full UV LED (70mm length) n/c option varnish lamp	2 x Air Cooled UV LED: Two full UV LED (70mm length) n/c option varnish lamp	2 x Air cooled UV LED: Two full UV LED (40mm length)
Max. Print Area mm	450mm x 450mm	650mm x 450mm	600mm x 900mm	1000mm x 1200mm	600mm x Unlimited
Max. Substrate Height (mm)	120mm head clearance	150mm head clearance	150mm head clearance	150mm head clearance	150mm head clearance
Bed Type	Teflon Coated Vacuum table (1 zone)	Teflon Coated Vacuum table (1 zone)	Teflon Coated Vacuum table (2 zone)	Teflon Coated Vacuum table (2 zone)	Indexed steel conveyor – swappable print fixtures
Inks	200ml Foil pouch UV ink types. Soft, hard and Hybrid.	200ml Foil pouch UV ink types. Soft, hard and Hybrid.	200ml Foil pouch UV ink types. Soft, hard and Hybrid.	200ml Foil pouch UV ink types. Soft, hard and Hybrid.	200ml Foil pouch UV ink types. Soft, hard and Hybrid.
Resolution	8 Pass, Bi-direction, 720 x 1200 dpi	8 Pass, Bi-direction, 720 x 1200 dpi	8 Pass, Bi-direction, 720 x 1200 dpi	8 Pass, Bi-direction, 720 x 1200 dpi	8 Pass, Uni-direction, 720 x 1200 dpi
Speed	2.5 Sq/m hr	3m Sq/m hr	5.1m/hr	5.1m/hr	example Golfball: 900pcs/h
Optional fixtures	Rotary 80mm dia' max.	Rotary 120mm dia' max.	1600 x 1410 x 1350mm inc. Latent UV varnishing lamp (W x L x H)	1700 x 1800 x 1350 mm inc. Latent UV varnishing lamp (W x L x H)	1700 x 1800 x 1350 mm inc. Latent UV varnishing lamp (W x L x H)
Dimensions	1110 x 730 x 650mm (desktop) (X x Y x Z)	1260 x 730 x 1300mm (Inc. stand) (X x Y x Z)	1600 x 1410 x 1350mm (Inc. stand) (X x Y x Z)	1700 x 1800 x 1350 mm (Inc. stand) (X x Y x Z)	1700 x 1800 x 1350 mm (Inc. stand) (X x Y x Z)
Unit weight	60kg	90kg	160kg	230kg	110kg

Axzyra Limited

Unit 4, Main Hall Farm,
School Lane,

Conington,
Cambridgeshire, UK
CB23 4LR

T +44 (0)1954 267 999
E contact@axzyra.com
W axzyra.com



Please follow us:

